

Extended Plasma Production Regime using 8.2 GHz Klystron in RT-1

RT-1における8.2GHzクライストロンを用いたプラズマ生成領域の拡大

Masaki Nishiura, Zensho Yoshida, Haruhiko Saitoh, Yoshihisa Yano, Yohei Kawazura, Tomoaki Nogami, Miyuri Yamasaki, Ankur Kashyap, Toshiki Mushiaki
 西浦正樹, 吉田善章, 齋藤晴彦, 矢野善久, 川面洋平, 野上智晃,
 山崎美由梨, Kashyap Ankur, 虫明敏生

Graduate School of Frontier Sciences, The University of Tokyo
 5-1-5, Kashiwanoha, Kashiwa, Chiba 277-561, Japan
 東京大学大学院新領域創成科学研究科 〒277-8561 千葉県柏市柏の葉5-1-5

This study reports the recent progress in improved plasma parameters of the RT-1 device. Increased input power and the optimized polarization of electron cyclotron resonance heating (ECRH) with an 8.2 GHz klystron produced a significant increase in electron beta, which is evaluated with an equilibrium analysis of Grad-Shafranov equation. The peak value of the local electron beta β_e was found to exceed 1. In the high beta and high-density regime, the density limit was observed for H, D, and He plasmas. The line average density was close to the cut off density for 8.2 GHz ECRH. The density limit exists even at the low beta region. This result indicates the density limit is caused by the cutoff density rather than by the beta limit. From the analysis of interferometer data, the uphill diffusion produces a peaked density profile beyond the cutoff density.

1. Introduction

The ring trap 1 (RT-1) device is a "laboratory magnetosphere" created by a levitated superconducting ring magnet, which is dedicated to studying physical processes in the vicinity of a magnetic dipole. An inhomogeneous magnetic field creates interesting properties of plasmas that are degenerate in homogeneous (or zero) magnetic fields. The RT-1 experiment has demonstrated the self-organization of a plasma clump with a steep density gradient; a peaked density distribution is spontaneously created through "uphill diffusion" [1-3]. Without direct ion heating, the ions remain cold being virtually decoupled with the hot component (> 10 keV) and low density ($< 10^{18} \text{ m}^{-3}$) electrons.

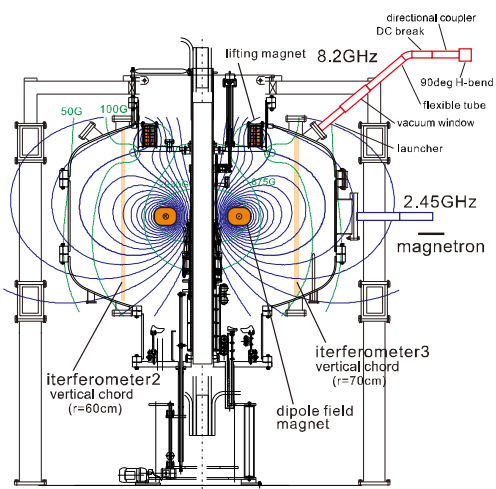


Fig.1. The cross sectional view of RT-1. The transmission lines L#1 and L#2 (not shown, but different

toroidal section.) for 8.2 GHz ECRH.

2. Extended operation regime in RT-1

For the study of two-fluid effects on the plasma flow in a high ion beta plasma, two scenarios are investigated to realize ion heating. Scenario A is an ion heating by an ion cyclotron resonance heating (ICRH). Scenario B is a collision relaxation between electrons and ions. In both cases, achieving the electron density $> 10^{18} \text{ m}^{-3}$ as a target plasma is essential. The operation regime of the RT-1 device has been investigated and extended to a higher electron density and beta by an increase of the ECRH power up to ~ 50 kW with an 8.2 GHz klystron [4]. Fig. 1 shows the cross sectional view of RT-1. The ECRH beams from two launchers L#1

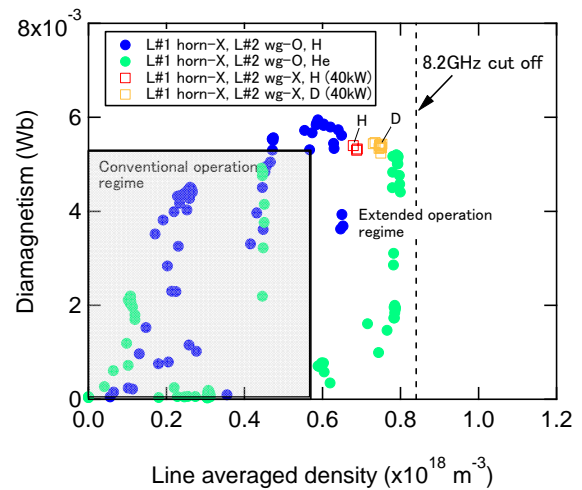


Fig.2. Extended plasma parameters (W_p and \bar{n}_e) for H, D, and He in the dipole configuration by the levitated superconducting coil of RT-1. The conventional (gray area) and extended operational regimes are plotted.

and L#2 were injected with both O-modes. The result is shown as the “conventional operation regime” (gray area) (see Fig. 2). After an upgrade in the ECRH system, the polarizations of millimeter waves from two launchers L#1 and L#2 were changed to optimize the deposition and heating efficiency. A twisted waveguide was inserted in the transmission line to rotate the polarization direction of 90 degrees from O- to X-modes. In the case of L#1 X-mode and L#2 O-mode injections at the ECRH power of 50 kW, the diamagnetic flux W_p increases by about 10%, and the line averaged electron density \bar{n}_e increases by 30%, compared with the conventional operation regime. The core chord of the interferometer reaches the maximum line averaged electron density $\bar{n}_e = 6.9 \times 10^{17} \text{ m}^{-3}$ for H, $7.5 \times 10^{17} \text{ m}^{-3}$ for D, and $8 \times 10^{17} \text{ m}^{-3}$ for He. In the case of both L#1 and L#2 X-modes, the achievable density improves slightly, with no observable increase in W_p . In the high beta regime, the lower bound of β_e is estimated by fitting magnetic measurements at nine different positions and Grad-Shafranov solutions. Here the lower bound is given by the extrapolation of the linear relation $\beta_e = 18 W_p$ that holds in the regime of $W_p < 3 \text{ mWb}$. In the higher beta regime, the nonlinear effect of the self-magnetic field diminishes W_p , thus the linear relation underestimates the beta. The possible anisotropic electron pressure (due to resonance heating of the perpendicular component) also provides an underestimate of the beta in the MHD fitting [5].

The isotope effect of H and D plasmas was investigated at the ECRH power of 40 kW (see Fig. 2). The W_p does not show a clear difference between H and D plasmas, and \bar{n}_p for the D plasma increases 8%. The isotope effect fails to show a drastic enhancement of the plasma performance in this operation regime.

In the high-density regime, the electron density fluctuation level was investigated to provide the density and beta limit. We observed fluctuations in the electron density that has a discrete spectrum of cascade modes at the frequencies less than 1 kHz. The fluctuations are spatially localized in the edge of the confinement region, and do not crush the produced plasma.

3. Electron density profile in high beta case

At the high beta and high density regime, \bar{n}_e

did not exceed the cutoff density for 8.2 GHz millimeter wave. The density limit does not originate from the beta limit because the low beta and high density regime still shows the density limit. The high beta plasma in a dipole magnetic field is characterized by a strongly peaked density profile [2, 4, 6], which is explained by kinetic equilibrium theory [3, 7]. In the high density regime for $\bar{n}_e = 7.8 \times 10^{17} \text{ m}^{-3}$ in the He plasma, the density profile was reconstructed in Fig. 3 from three-chord interferometer data. Even though the density limit exists in \bar{n}_e , the profile of electron density forms a central peaking that exceeds the cutoff density of 8.2 GHz-ECRH; hence, the peaked density ($> 10^{18} \text{ m}^{-3}$) is produced by inward diffusion.

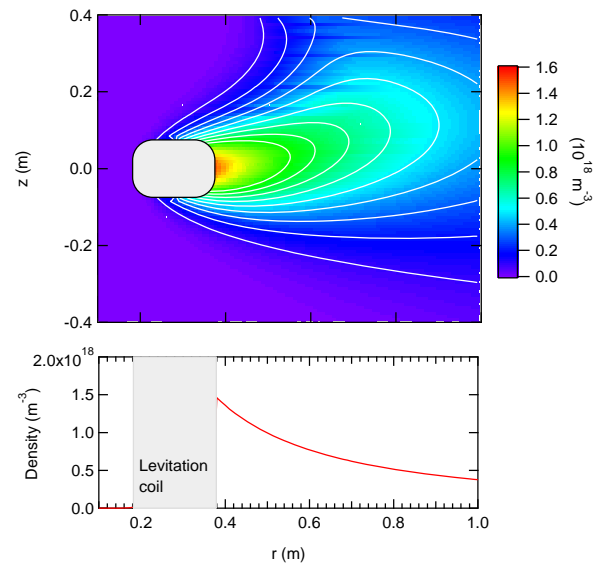


Fig.3. The electron-density profile in RT-1, which is reconstructed from three chord interferometer data. The lower graph shows the density profile at $z = 0$.

Acknowledgments

Authors would like to thank Dr. Furukawa of Tottori University for discussion. This work was supported by JSPS KAKENHI Grant Numbers 23224014 and 24360384.

References

- [1] Z. Yoshida, et al., Phys. Rev. Lett. 104 (2010) 235004.
- [2] H. Saitoh, et al., Nucl. Fusion 51 (2011) 063034.
- [3] Z. Yoshida, et al., Plasma Phys. Control. Fusion 55 (2013) 014018.
- [4] H. Saitoh, et al., Phys. Plasmas 21 (2014) 082511.
- [5] M. Furukawa, , Phys. of Plasmas 21 (2014) 012511.
- [6] D. T. Garnier, et al., Nucl. Fusion 49 (2009) 055023.
- [7] A. Hasegawa, et al., Nucl. Fusion 30 (1990) 2405.